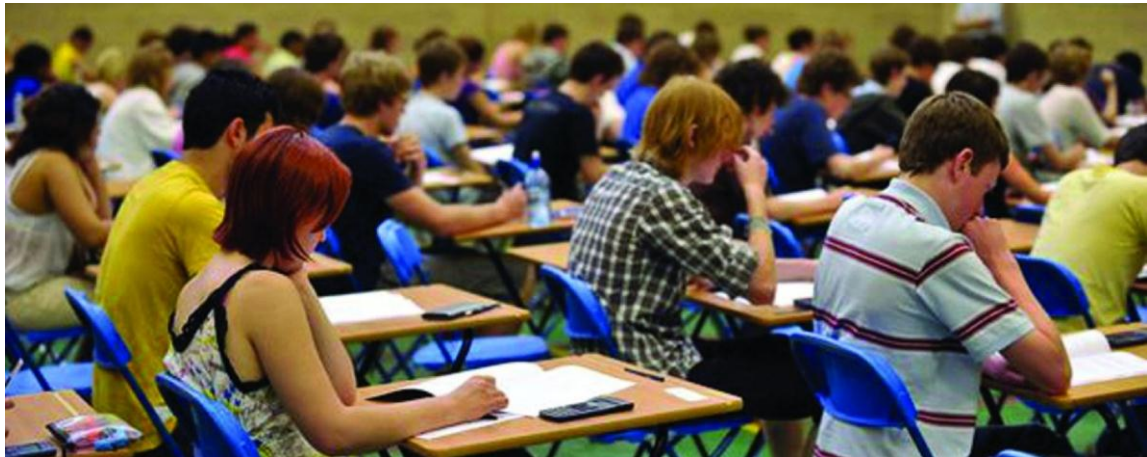


IStructE Exam Preparation Course



The next Chartered Member Examination will be held on 10th July 2015.

The Regional Group Preparation Course will focus primarily on Schematic Design and participants will be required to present solutions to past papers. Candidates should bring usual class materials.

The Fee is €250 and interested candidates should register in advance by sending their details to joe.ryan@hanleypepper.ie

**Mondays; 11th, 18th, 25th May
Tuesday 2nd June**

Room 248, DIT Bolton Street, Dublin

6.30-9.00pm
